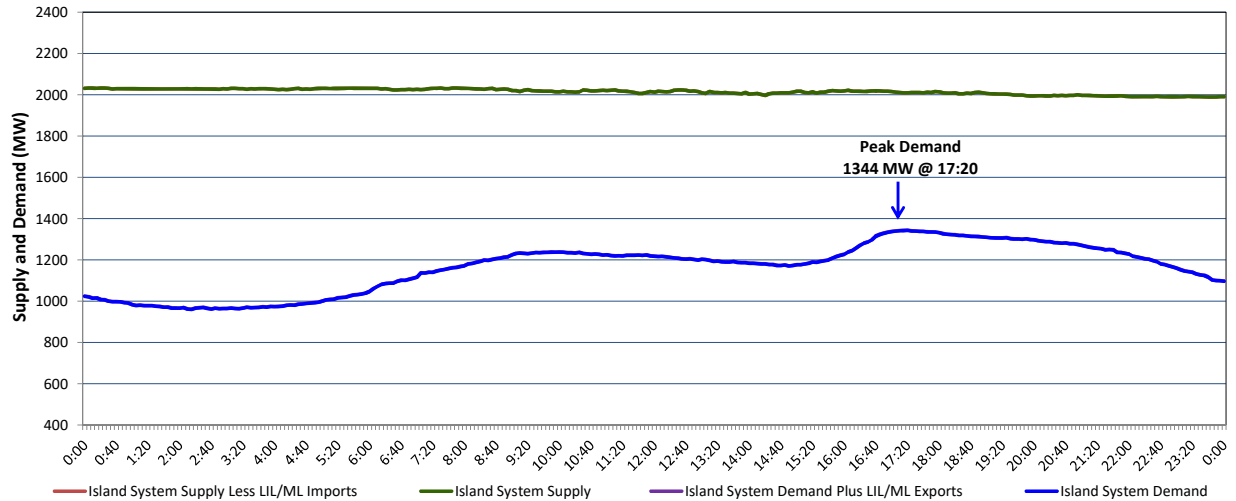


**Newfoundland Labrador Hydro (NLH)  
Supply and Demand Status Report Filed Monday, December 30, 2019**

**Section 1  
Island Interconnected System Supply, Demand & Exports  
Actual 24 Hour System Performance For Friday, December 27, 2019**



**Supply Notes For December 27, 2019**

<sup>1,2</sup>

A As of 1719 hours, December 14, 2019, Stephenville Gas Turbine available at 25 MW (50 MW).

**Section 2  
Island Interconnected Supply and Demand**

| Sat, Dec 28, 2019                            | Island System Outlook <sup>3</sup> |     | Seven-Day Forecast          | Temperature (°C) |         | Island System Daily Peak Demand (MW) |                       |
|--|------------------------------------|-----|-----------------------------|------------------|---------|--------------------------------------|-----------------------|
|  |                                    |     |                             | Morning          | Evening | Forecast                             | Adjusted <sup>7</sup> |
| Available Island System Supply: <sup>5</sup> | 2,010                              | MW  | Saturday, December 28, 2019 | -5               | 0       | 1,315                                | 1,292                 |
| NLH Island Generation: <sup>4</sup>          | 1,670                              | MW  | Sunday, December 29, 2019   | -1               | -2      | 1,340                                | 1,317                 |
| NLH Island Power Purchases: <sup>6</sup>     | 115                                | MW  | Monday, December 30, 2019   | -1               | -2      | 1,460                                | 1,435                 |
| Other Island Generation:                     | 225                                | MW  | Tuesday, December 31, 2019  | -1               | -3      | 1,350                                | 1,326                 |
| ML/LIL Imports:                              | -                                  | MW  | Wednesday, January 1, 2020  | -3               | -1      | 1,350                                | 1,326                 |
| Current St. John's Temperature & Windchill:  | -5                                 | -11 | Thursday, January 2, 2020   | 1                | -2      | 1,310                                | 1,287                 |
| 7-Day Island Peak Demand Forecast:           | 1,460                              | MW  | Friday, January 3, 2020     | -2               | -1      | 1,315                                | 1,292                 |

**Supply Notes For December 28, 2019**

<sup>3</sup>

- Notes:
1. Generation outages for running and corrective maintenance are included. These are not unusual for power system operations. They generally do not impact customer supply. The power system operators schedule outages to system equipment whenever possible to coincide with periods when customer demands are low and sufficient supply reserves are available. However, from time to time equipment outages are necessary and reserves may be impacted.
  2. Due to the Island system having no synchronous connections to the larger North American grid, when there is a sudden loss of large generating units there may be a requirement for some customer's load to be interrupted for short periods to bring generation output equal to customer demand. This automatic action of power system protection, referred to as under frequency load shedding (UFLS), is necessary to ensure the integrity and reliability of system equipment. Under frequency events have typically occurred 5 to 8 times per year on the Island Interconnected System and the resultant customer load interruptions are generally less than 30 minutes. With the activation of the Maritime Link frequency controller during the winter of 2018, UFLS events have occurred less frequently.
  3. As of 0800 Hours.
  4. Gross output including station service at Holyrood (24.5 MW) and improved NLH hydraulic output due to water levels (35 MW).
  5. Gross output from all Island sources (including Note 4).
  6. NLH Island Power Purchases include: CBPP Co-Gen, Nalcor Exploits, Rattle Brook, Star Lake, Wind Generation and capacity assistance (when applicable).
  7. Adjusted for curtailable load, market activities and the impact of voltage reduction when applicable.

**Section 3  
Island Peak Demand Information  
Previous Day Actual Peak and Current Day Forecast Peak**

|                   |  |       |          |
|-------------------|--|-------|----------|
| Fri, Dec 27, 2019 | Actual Island Peak Demand <sup>8</sup> | 17:20 | 1,344 MW |
| Sat, Dec 28, 2019 | Forecast Island Peak Demand            |       | 1,315 MW |

Notes: 8. Island Demand / LIL / ML Exports (where applicable) is supplied by NLH generation and purchases, plus generation owned and operated by Newfoundland Power and Corner Brook Pulp & Paper (Deer Lake Power, DLP).